



Greater Manchester  
and Eastern Cheshire  
Strategic Clinical Networks



North West Coast  
Clinical Networks  
Cheshire and Merseyside



London  
Clinical Networks

# EARLY Toolkit

Supporting the Identification of People  
in the Last Year of Life



Gill Bailey - Holly Tofield - Carmel Wiseman

North West Strategic Clinical Network

# Introduction

Development of EARLY Toolkit

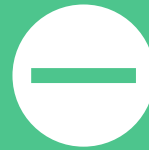
Pilot

National review (2022-2023)

# Why identification is so important



Earlier identification of patients who may be in the last 12 months of their life is important because this provides an opportunity for them (or NOK, carers) to be involved in planning for their future care.



The offer may be declined but can be revisited, is voluntary etc



Planning might include thinking about the type of care they would like or would not like, where they would like to be cared for, who should be involved in their care etc. There may also be an opportunity to consider anticipatory clinical management planning

# What is 'EARLY'

---

EARLY is an acronym for:

---

E - Early identification

---

A - Advance care planning

---

R - Record

---

L - Look again

---

Y - You can continually improve

---

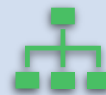
[NHS England and NHS Improvement North West » EARLY Toolkit for Primary Care](#)



The EARLY toolkit includes a search which can be run in GP clinical system



The search is based on key elements such as disease coding, number of admissions etc



The list produced is divided into broad 'disease' headings



The individuals on the list **must** then be clinically validated as being in the last year of life as the search is **not** 100% sensitive

# Clinical Validation

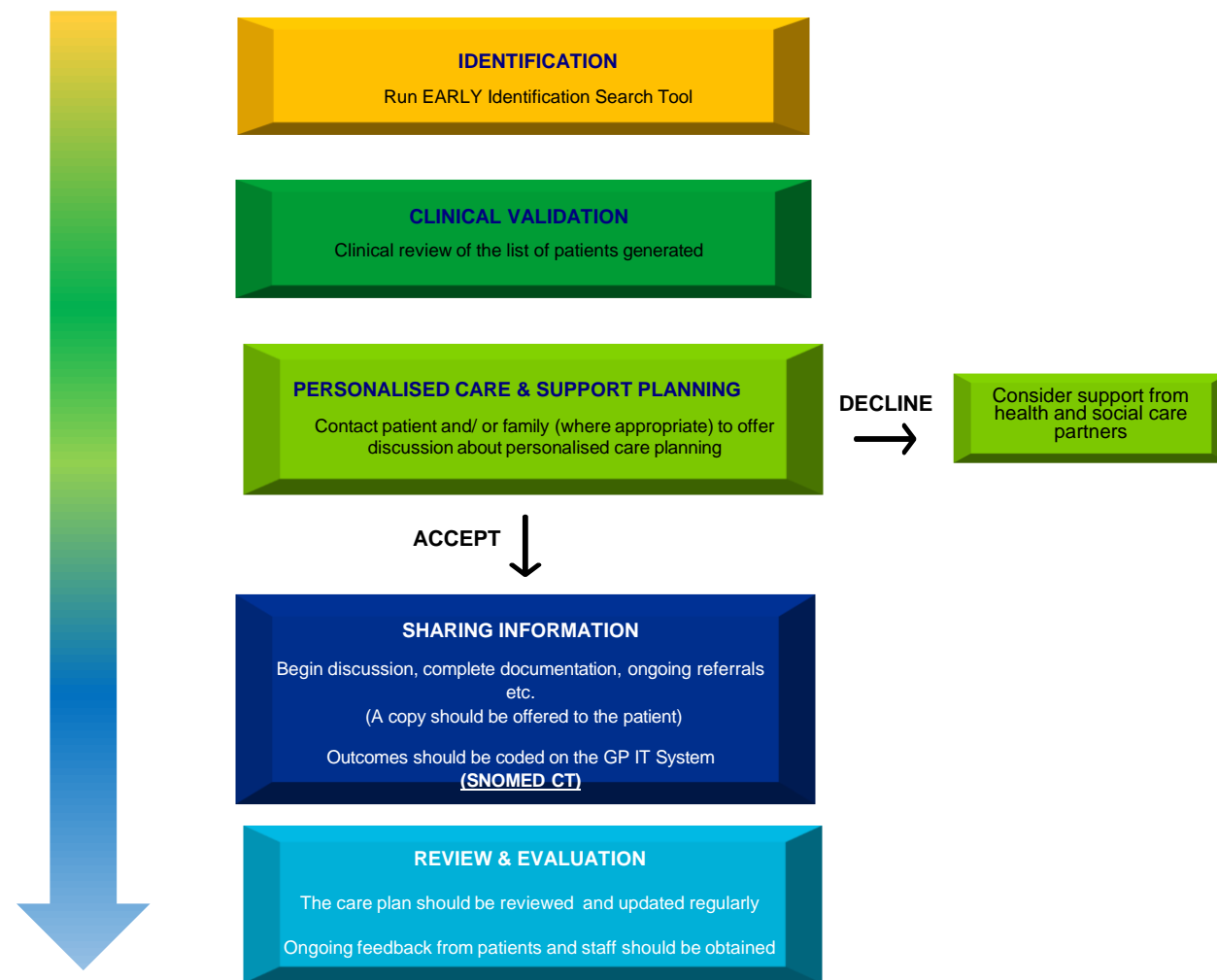
Clinically validate the list – ‘Would I be surprised if this patient died in the next 12m’

Decide if appropriate to approach EOLC discussions and if so, offer the opportunity to engage

Conversations may then develop into planning, ACP, anticipatory clinical management plans



# National EOLC – EARLY Identification and Personalised Care Planning





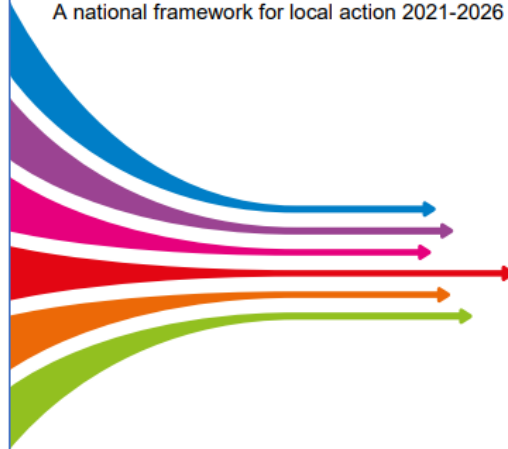
Palliative and End of Life Care  
Strategic Clinical Networks  
Core Metrics and Technical Guidance

July 2022, version 2.2

1

## Ambitions for Palliative and End of Life Care:

A national framework for local action 2021-2026



National Palliative and End of Life Care Partnership  
May 2021

Classification: Official

Publication reference: PR1673



Palliative and End of Life Care  
Statutory Guidance for Integrated Care  
Boards (ICBs)

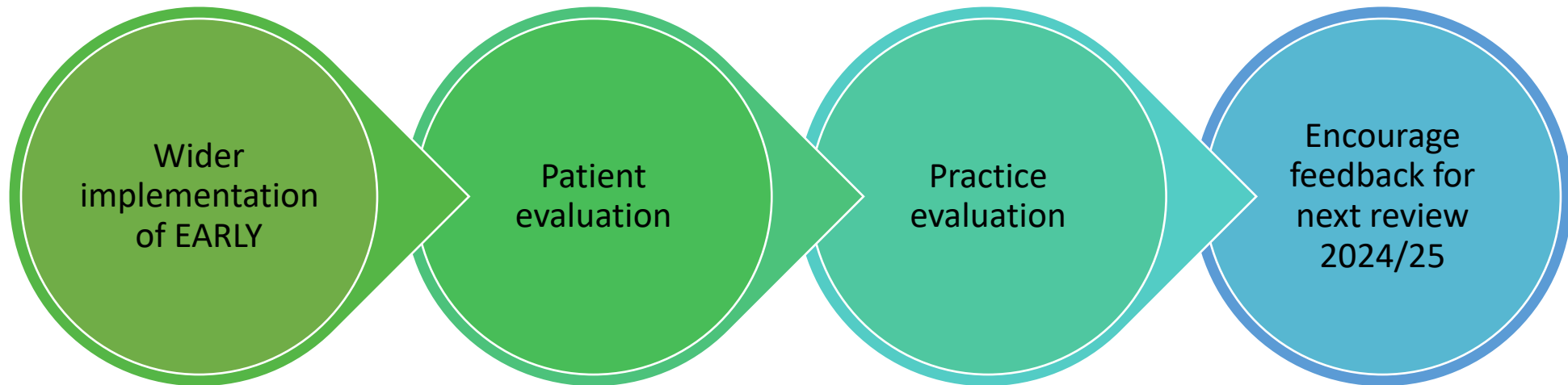
29 September 2022

# National Guidance

---

# Next Steps

---





# Contact Details

[england.early@nhs.net](mailto:england.early@nhs.net)

[gillian.bailey3@nhs.net](mailto:gillian.bailey3@nhs.net) Greater Manchester & Eastern Cheshire

[holly.tofield1@nhs.net](mailto:holly.tofield1@nhs.net) Cheshire & Merseyside

[carmel.wiseman@nhs.net](mailto:carmel.wiseman@nhs.net) Lancashire & South Cumbria